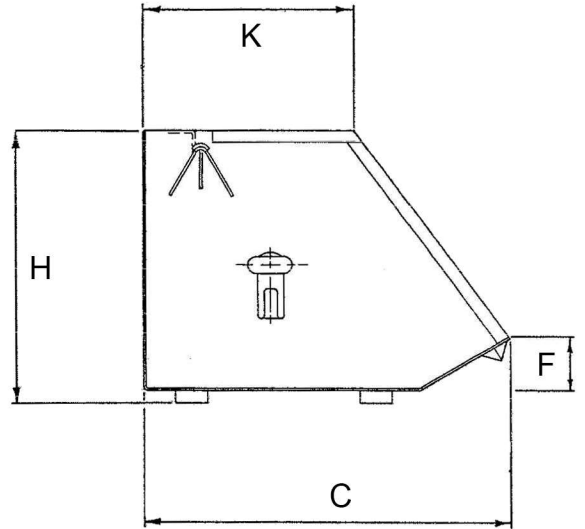
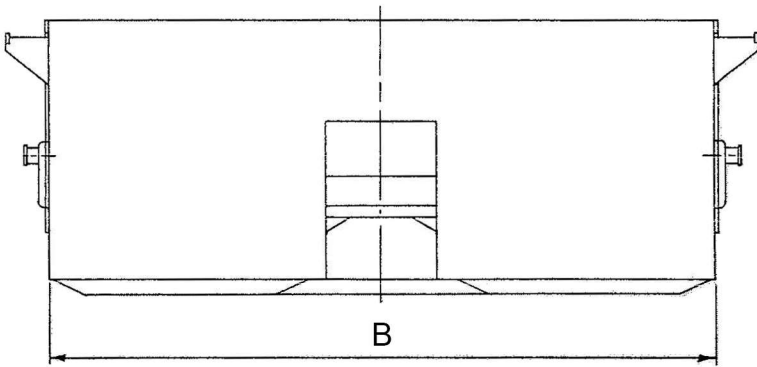
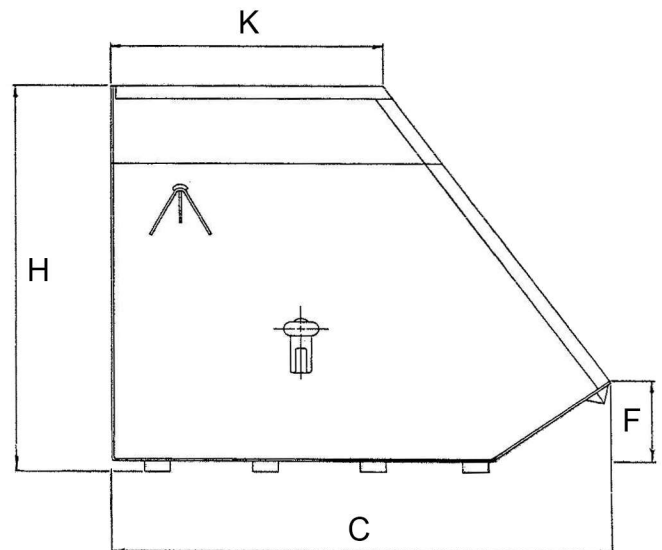
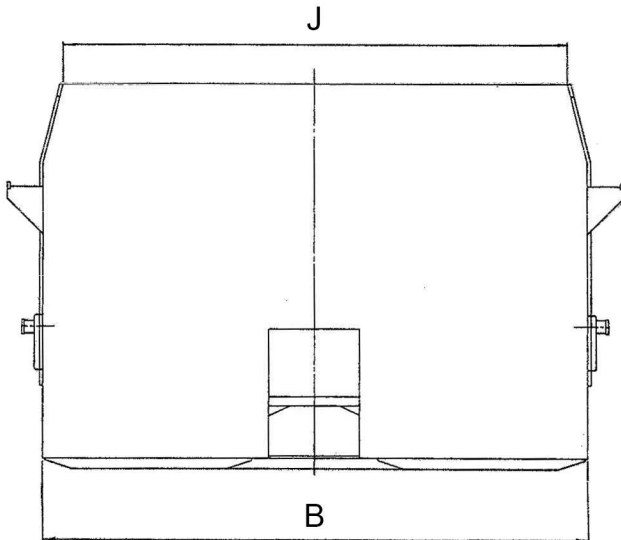


SKIP TYPE / WITH LIP



STANDARD SKIP TYPE CONTAINERS WITH LIP						Weight	Export Cu. Ft.
SIZE	B	C	F	H	K		
2 CU. YD.	84"	46"	7"	34"	27"	900	87
2 1/2 CU. YD.	84"	52"	7"	38"	30"	1000	109
3 CU. YD.	84"	59"	9"	38"	37"	1100	124
4 CU. YD.	84"	65"	12"	47"	37"	1350	169
5 CU. YD.	84"	70"	12"	54"	40"	1900	210

SKIP TYPE / WITH LIP



■ Container has front wall and two end walls. The bottom plate is bent upward, forming a lip on the rear edge. A bail secures the container during the dumping operations. Under certain conditions minor adjustments to standard containers are necessary to proper operation. Requirements should be checked with engineering department before final purchase. Many special variations can be engineered to meet unusual problems. NOTE: All dimensions for reference only. If exact dimensions are required, check with engineering department. All weights plus or minus 5 per cent.

STANDARD SKIP TYPE CONTAINERS WITH LIP & S-2 BAIL						Weight	Export Cu. Ft.
SIZE	B	C	F	J	K		
6 CU. YD.	84"	76"	12"	78"	42"	2150	250
7 1/2 CU. YD.	84"	84"	12"	78"	40"	2400	319